



## Snowflake Mittens

### Designer Notes

An easy fair isle pattern, that makes a warm and cozy pair of mittens.

To work a larger pair of mittens, use a aran weight yarn, to work a smaller size, use a heavy DK.

### Materials

#### Yarn

Worsted Weight Yarn (2 colors). Approx 200 yds each color. I used handspun

#### Needles

Size 7 US (4.5mm) knitting needles OR SIZE TO OBTAIN GAUGE

#### Notions

Stitch markers, waste yarn

### Gauge

21 stitches and 25 rows = 4 inches in in Fair Isle in the round patt  
TO SAVE TIME, TAKE TIME TO CHECK GAUGE.

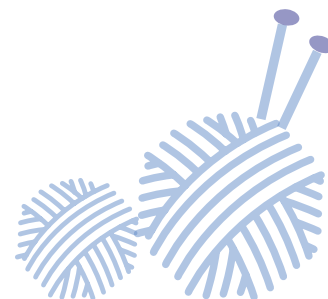
### Sizes

Women's S

#### Finished Measurements

Hand circumference (unstretched): 7 1/2"

Length: 10 1/2"



# INSTRUCTIONS

## Cuff

CO 32 st, placing beginning of round marker, join to work in round

Work K2, P2 rib for 3"

Inc 4 st evenly across — 36 st

## Hand

Begin working chart.

## Gusset

**AT THE SAME TIME:** Starting on Row 5 of the hand chart, begin working gusset chart on the three gusset stitches (st 2 - 4 for right mitten, 16 - 18 for left mitten)

After gusset chart is complete, put 9 gusset sts on holder

CO 3 st over gap, continue working hand chart to end

## Thumb

Beginning thumb chart, rejoin yarns, pick up 2 sts in space between CO st and held sts, work across 9 held sts, CO 2 sts in space btw CO & held sts, pick up 3 sts over CO sts — 16 s

Join to work in round, continue working rd 2 - 11 of thumb chart

## Thumb shaping

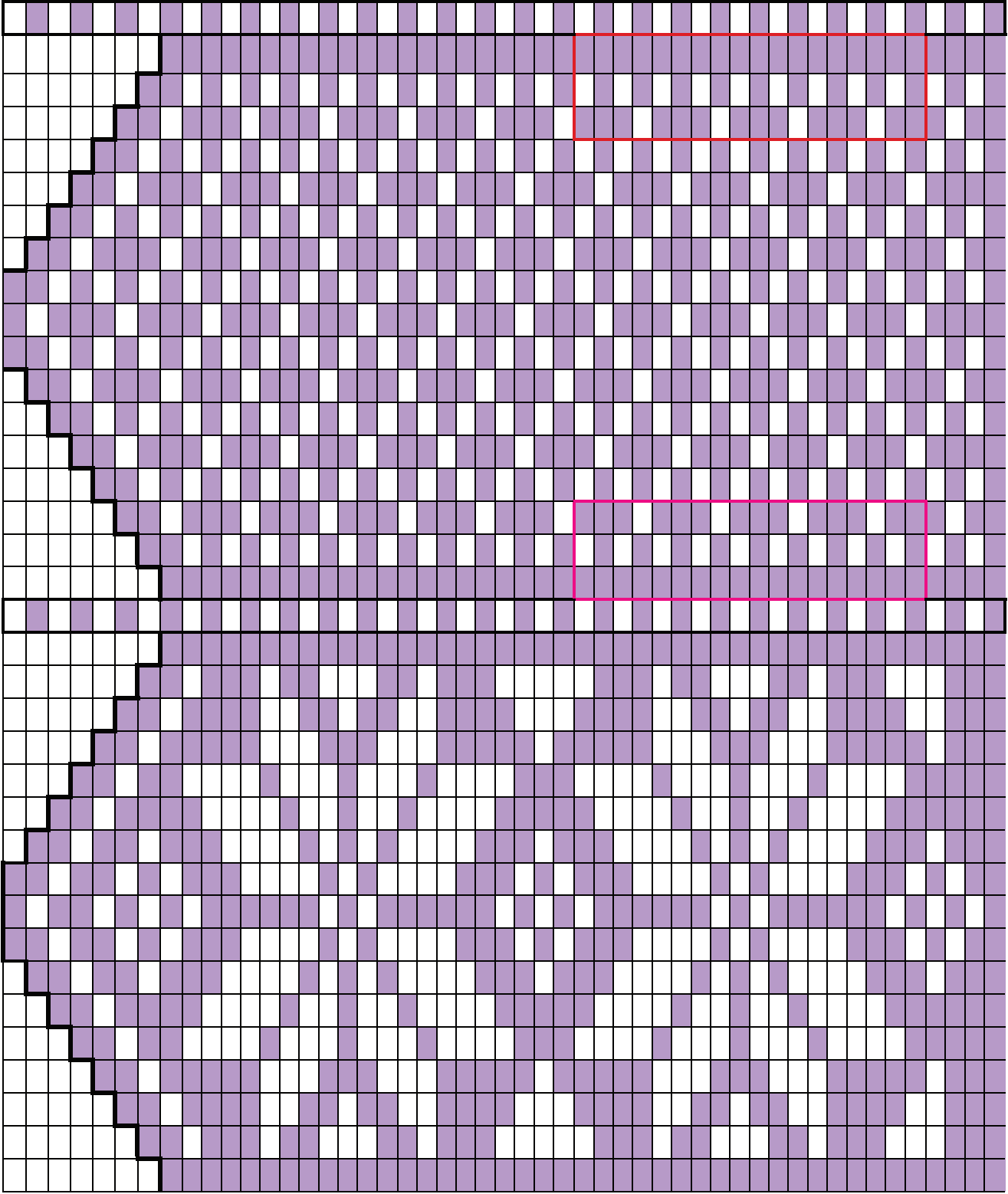
Rd 12: K2tog around — 7 st

Rd 12: K2tog across to last st — 4 st

## Finishing

Cut yarn, pull through remaining stitches. Weave in ends.

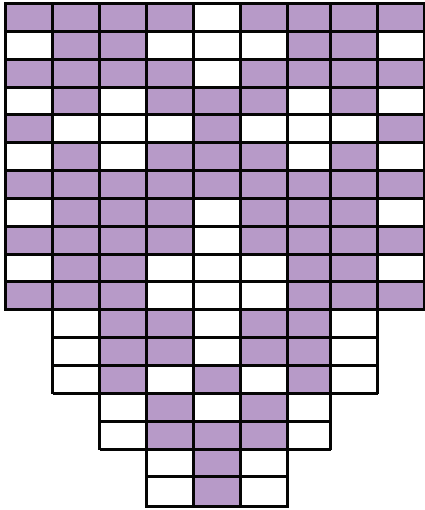




Right Gusset

Left Gusset

**GUSSET**



**THUMB**

